

THE TRUTH ABOUT

An Open Letter And Report To

Saturday, October 2, 1948

(Report N

In our two earlier reports to you published in this newspaper on September 25 and September 29, we told you the truth about the charges that Matilija Dam is unsafe; that if the Board of Supervisors had known that Matilija Dam would cost so much it would never have been built, and that because of changes in design the contractors spent \$200,000 in excess of the contract, which claim the lawyers for the Board successfully settled for \$95,000.

We now propose to tell you—the people—the truth about some other charges. **IT IS CHARGED:**

That if the Engineers had properly discharged their duties they would have realized that some other type of dam should have been built at some other site. **THE TRUTH:**

On January 29, 1946 we prepared and submitted to the Board of Supervisors a plan outlining seven possible dams at four possible sites on Matilija Creek. These include 3 single concrete arch type dams, 2 multiple concrete arch type dams, 1 gravity dam and 1 rock fill dam.

In addition, we, at our own expense and at no expense to the District, prepared detailed plans and specifications for a rock fill dam. These studies and plans and specifications demonstrated to us that the amount of concrete used in surfacing a rock fill dam and used in the spillway would equal the amount of concrete in an arch type dam; and that the rock fill dam would have the added expense of greater excavation and the expense of the fill in rock. Furthermore, history has shown there would be a great deal more leakage through a rock fill dam. Our conclusions then and now are that a rock fill dam would cost between one and two million dollars more than a concrete arch type dam and would not be as satisfactory

ately suggest the desirability of an arch type dam. . ."

On May 28, 1948, William P. Creager of Buffalo, New York, one of the foremost authorities on arch type dams in the world, stated:

"It is going to be very difficult for anyone to prove that any other type of dam than an arch type dam would be more economical."

We were and are primarily concerned with the welfare of the people of Ventura County and the safety of Matilija Dam. We designed a concrete arch type dam in the interest of safety.

THERE NEVER HAS BEEN A FAILURE OF AN ARCH TYPE DAM IN THE HISTORY OF ENGINEERING!!

Here is our answer to another charge: **IT IS CHARGED:**

The engineers should have conducted core borings before building Matilija Dam. If they had done so the unsafe condition of the site would have been discovered.

THE TRUTH:

As we have already pointed out in the first report, the dam is safe.

The State Engineers and State Bureau of Dams have approved the plans, foundation, and construction and are now willing to approve the completed structure.

With reference to core borings: We did consider the advisability of core borings in the summer of 1945. We prepared plans to conduct core borings. We made preliminary arrangements with Raymond Concrete Pile Co. of Los Angeles and New York (one of the largest companies of its kind in the world) to furnish the necessary core drilling equipment. We estimated that this operation would cost approximately \$42,000. Our engineers carefully reviewed the geological exposures, gave

face characteristics which closely follow those of posures."

This 1931 opinion of I the 1945 opinions of our verified on May 24, 194 mately 18 experts and at Matilija Dam to revi when the dam had been k vation 1050. At that tin liave, Consulting Geolo the California State Bur that core boring was un Fred Hermann, Consult the California State Bur that core boring was not but that the logs might k

In the final analysis whether or not core bori dertaken at any particu been vested in the Cali eau of Dams. Under Se California Water Code, of Dams designates its exploratory work inclu and under Section 6204 Water Code, the State may waive core boring.

The State Bureau of and inspected all of our Dam and we met and of its requirements. It i willing to approve the ture.

IT IS CHARGED:

That we—the enginee previous dam experienc earth filled dam:

THE TRUTH:

Donald R. Warren pe experience on the desigr ed construction of the fo appurtenant works:

1. Tons Lake Dam

Service Every Night Except Sat. 7:45

Beginning Sunday morning with the Old Sky Pilot as the Evangelist. A cordial invitation is extended to all who can help, or who need help.

REVIVAL MEETING

WEDNESDAY, OCT. 6th—7:30 P.M.

- Nationally Known "Missionaires Youth Quartet"
- Wesley Steiberg—National Youth Director of Christ's Ambassadors.
- Bill Lewis—California Youth Director.
- Broadcast of This Service Beginning at 7:45 P.M. Over KVEN (1450 Kyc.).

OUT MATILIJA

The People Of Ventura County

lo. 3)

ill be found to
the surface ex-

Hyde Forbes and
r engineers was
7, when approxi-
consultants met
ew the situation
uilt to about ele-
me Chester Mar-
gist representing
eau of Dams, said
necessary and Mr.
ing Engineer for
eau of Dams, said
only unnecessary
be misinterpreted.
the question of
ng should be un-
lar dam site has
fornia State Bur-
ction 6203 of the
the State Bureau
requirements for
ding core boring,
of the California
Bureau of Dams

Dams supervised
work on Matilija
complied with all
s now ready and
completed struc-

rs— have had no
e except on one

ersonally has had
and/or supervis-
llowing dams and

Municipal Utility District.

7. Big Bend After Bay Dam, single arch type, for Sacramento Municipal Utility District.

8. Brush Creek After Bay Dam, single arch type, for Sacramento Municipal Utility District.

9. Sweetwater Dam, rock fill dam, for Sacramento Municipal Utility District.

10. Union Valley Dam, rock fill dam, for Sacramento Municipal Utility District.

11. Ice House Diversion Dam on south fork of Silver Creek, an Ambursen-type buttress dam for the Sacramento Municipal Utility District.

12. Earth fill dam on Lilly Creek at Idyllwild, Riverside County.

13. Dos Pueblos Ranch Dam, earth fill dam, Santa Barbara County, for Signal Oil Company.

In addition, Donald R. Warren, while Senior Hydraulic Engineer for the State of California (competitive examination), directed the investigation to determine the variation and how to control the incursion of salinity in the Sacramento-San Joaquin Delta (State Bulletin No. 27) which investigation resulted in the construction of Shasta Dam.

In 1929 Donald R. Warren placed third in competitive examination given by the California Division of Dams for Engineers for Dam Inspection, whose duties were to make field inspections on the safety of dams in the State of California.

In addition to this Dam experience, Donald R. Warren has had other extensive engineering experience on notable projects, only a few of which are:

He was Senior Field Engineer, responsible for the location and fitting together of the entire San Francisco Oakland Bay

for "engineering extraordinary, builder of the industrial west, creator of great works."

John Hallock was our Project Manager on Matilija Dam. He has had 10 years experience in the office of the United States Engineer, rising from Engineer Inspector at Buffalo, New York, to Principal Civilian Engineer, Los Angeles office.

During this time he was engineer on 22 dams aggregating in excess of \$60,000,000. Included in these 22 dams were the Prado Dam on the Santa Ana River, Santa Fe Dam on San Gabriel River, Hanson Dam in Tujunga Wash, Sepulveda Dam on Los Angeles River.

During a two year period as Principal Civilian Engineer, United States Engineer's Office, Mr. Hallock was in charge of all investigations, site surveys, and military installations in the Los Angeles District, which aggregated \$600,000,000 in construction costs. He has had extensive flood control experience on the Mississippi, Los Angeles and other rivers.

In addition to the services of Mr. Hallock we employed approximately 75 other engineers of all specialties on Matilija Dam, and some 20 engineers in the preparation, plans and specifications on Matilija Dam.

The Donald R. Warren Co. has engaged in engineering work during the past seven years aggregating \$700,000,000 covering all types of military, naval, and industrial works and establishments. At the conclusion of the war, the Donald R. Warren Co. was awarded the United States Navy Certificate of Achievement, and 11 men in its employ received meritorious medals for distinguished civilian service.

Ordinarily, modesty would preclude us from mentioning matters of this kind. But

Sunday School . . . 9:45 A. M.
Classes for All Ages
Morning Worship 11 A. M.
Evening Service—8:00 P. M.
Holy Communion First Sunday of Every Month
Worship with a Friendly Church
Leonard E. Hultgren, Pastor

Sacred Recordings—Band Music, 7:15
7:30 Service
"WHAT THEN SHALL I DO WITH JESUS"
Special Band Music
Wed. Nite—Divine Healing Service—Prayer
for the Sick

ier
NY
3
M.
TS!
M.
orship

THE TRUTH ABOUT

An Open Letter And Report To

Saturday, October 9, 1948

(Report No. 1)

In our three earlier reports to you published in this newspaper, we told you that Matilija Dam is safe; about the false charges that if the Board of Supervisors had known what Matilija would actually cost it would never have been built; that because of changes in design the contractor spent \$200,000 in excess of the contract, which claim the lawyers for the Board successfully settled for \$95,000; that if the engineers had properly discharged their duties they would have realized that some other type of dam should have been built at some other site; that the engineers should have conducted core borings, and that the engineers had no previous dam experience, except on one earth fill dam.

We have told you the truth about these false charges in this manner because we believe that unless you are advised of the

notify the State Bureau of Dams that Matilija Dam has been completed.

Here are two photographs of Matilija Dam taken May 10, 1948. The one on the top is taken from a point upstream, showing water in the reservoir to elevation approximately 1030. The photograph on the bottom was also taken May 10, 1948, looking upstream.

In the photograph on the top, with water to elevation approximately 1030, water in the reservoir stood at a depth of 95 feet above the base of the dam. This constitutes only approximately 300 acre feet of water. Water can be stored to elevation 1125 feet and will result in storage of approximately 7,000 acre feet.

1948 the cry went up from those that Matilija was unsafe, denying the fact that the plan and construction had at all been compared and conducted under supervision and subject to the inspection of the State Bureau of Dams. Our consultants with experience on 800 dams throughout the country, as the State Bureau of Dams and consultants, pronounced the dam safe. Yet the rumors and charges persisted, that the Dam was unsafe by laymen that a dam akin to the charge by laymen is unsound. False rumors and charges that a bank any Tom, Dick or Harry with impunity and charge that a dam is unsafe, inflame public opinion and destroy confidence. (Ignorance is the root of fear). To the best of our knowledge the purported geologists who gave adverse reports on the safety of Matilija Dam either were not geologists or were men who had no experience on dam design and

Robert L. Ryan your Chief Engineer for the District of Columbia had no previous experience far as we have been able to determine. In 1938 he did design a bridge at the mouth of the Santa Clara River. Since that time we have designed bridges for his office:



OUT MATILIJA

The People Of Ventura County

p. 4)

on various sources, notwithstanding, excavation times been preferred the supervision of the our experts and on more than world; as well dams, its experts ed Matilija Dam inferences still was unsafe. The am is unsafe is men that a bank s destroy confi-laws which pro-is unsound. But can come along ge that a safe blic opinion and rance is the tap t of our know-ogists and engi-opinion on the ither never saw a they reported limited or no ex-nd construction.

County Surveyor strict who is the Matilija Dam has nce on Dams so e to discover. In ridge across the ara River. That st spring freshet. ve designed six

the truth, you would have learned that these additional costs were offset by additional savings in interest rates. But you weren't told.

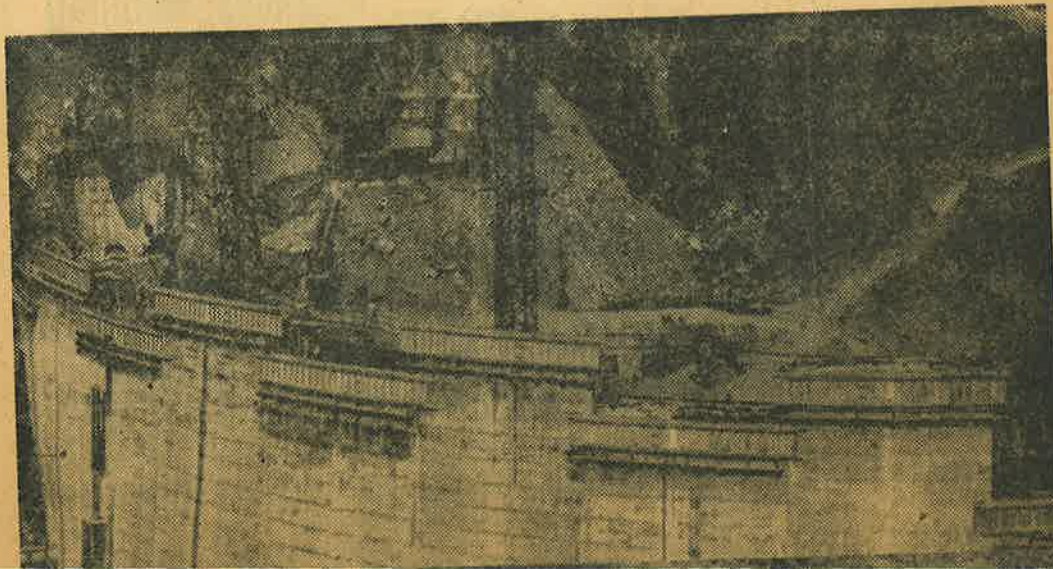
Whispering campaigns are like scattering feathers from a pillow. It isn't always possible to tell where the feather lights. It isn't always possible to reply to every false charge.

THE BASIC AND FUNDAMENTAL FACT IS THAT MATILIJA DAM IS NOW COMPLETE AND SAFE. YOUR BOARD OF SUPERVISORS SHOULD TAKE STEPS TO SECURE PERMISSION FROM THE STATE BUREAU OF DAMS TO STORE WATER IN THE RESER-

right to a full and truthful answer. Here are some of the questions:

1. Why did the Board pay the contractors \$95,000 when the Board's engineer said the contractor's claim was without merit, after the Superior Court of Ventura County had ruled that there was no change in the design of the Dam, and after the contractors themselves admitted their claim was \$35,276.20? And when all other extra work had been fully paid for. (please note: all extra work between December 1946 and February 1948 was paid for in full under extra work orders authorized in advance by the Board). \$95,000.00 for what?

2. Why has the Board of Supervisors



Our first
this news
as we are
ors has ta
for the c
to store
from the
pervisors
has been
State Bu
true to
truth you

entine Presides:

Matilija Hearing Begins

HEARING on a demurrer by the Donald R. Warren company, designer of Matilija dam, to quash the county flood control district's claim for a million dollars in damages against the company, got under way in superior court today.

With Judge L. N. Turentine presiding, the company through its attorneys, Stanley Burrill and Charles Loving, started to argue its case. The district's charge that the damsite is located on dubious and marginal land is not a matter for the court to decide, Burrill charged.

This matter should be decided by the state engineer as matters of dam safety are under his jurisdiction, he continued. Furthermore, the lawyer contended, the district has not shown in its complaint that the state engineer has stated that the site is unsafe.

The district doesn't show, either, that the plans and specifications weren't okayed by the state engineer or that the work on the dam wasn't carried out in accordance with those plans and specifications or revised ones, Burrill continued.

HEARING TO BE RESUMED

The district's complaint does not show that the state division of dams has been notified of the completion of the dam, the attorney argued. The hearing recessed for noon but was to be continued this afternoon.

Judge Turentine is also expected to hear a motion by the district that the Warren company's cross-complaint claims for payment for Casitas dam be disallowed today.

Mr. and Mrs. Donald R. Warren and Supervisor Robert Leffer were in court this morning to hear the arguments.

Matilija Dam Suit:

County Wins 1st Round

THE Ventura county flood control district has won the first round in court preliminaries with the Donald R. Warren company over the building of Matilija dam.

Judge L. N. Turentine of San Diego, sitting in superior court here, yesterday afternoon overruled demurrers of the Warren company to the district's million dollar breach of contract action. By his ruling, the judge allowed the district's complaint against the Warren company to stand untouched; he removed no counts against the Warren company from the district's complaint.

AIR ALL CHARGES

The district thus will be able to air all its charges when trial over building of Matilija dam starts on Jan. 10, the date definitely indicated by Judge Turentine as starting time.

The Warren company yesterday protested generally and specially the various counts in the district's complaint for damages and tried to show that the district's contention the dam was erected on a dubious and marginal damsite was not for the courts but for the state engineer to decide.

The company also tried to show that the district has no cause for action on several other charges listed in the complaint, but each time the Warren company was overruled.

Speaking for the district, Legal Consultant S. V. O. Prichard told the court that the district, like any other individual owner, had a right to appeal to the courts for protection of its individual rights. He said there was no provision under the state dam act whereby the state engineer has jurisdictional rights of an individual under a contract. The act delegates authority on public rights, not private, he said.

During cross-examination, Prichard then formed another hypothetical question, for the most part basing it on testimony produced for the district and alleging Warren's procedure on the dam project.

The witness was told by Judge L. N. Turentine to put aside assumptions of the defense's question and to consider the assumptions made for him by Prichard in answering Prichard's question. Thomas then answered that many of the things cited by Prichard, if true, were not consistent with good engineering practice.

Warren Sees New Tactics In Dam Suit

The Ventura County Flood Control District has been forced to change its tactics in its suit for \$1 1/4 million against the Donald R. Warren Co., engineering firm, Warren said today.

The suit involves responsibility for difficulties at Matilija Dam near Ojai.

"It was said that we had lost the first round Monday," Warren said, in Glendale. (On Monday Warren's demurrer to the flood control district's complaint was overruled.)

"But the next day the supervisors, who had been claiming the dam was unsafe, applied for full water storage. Now the suit is on a purely contractual relationship, whether we fulfilled our contract."

Core Drillings

Asked whether it was true that his company had secured Matilija Dam core drillings from the office of Neil Stiver, Zone 1, Flood Control, manager, Warren said that Dr. John P. Buwalda had examined the core drillings about a month ago.

"Core drillings are public records," he said. "I understand Ryan (County Surveyor Robert Ryan) objected to it, but anyone can go look at core drillings."