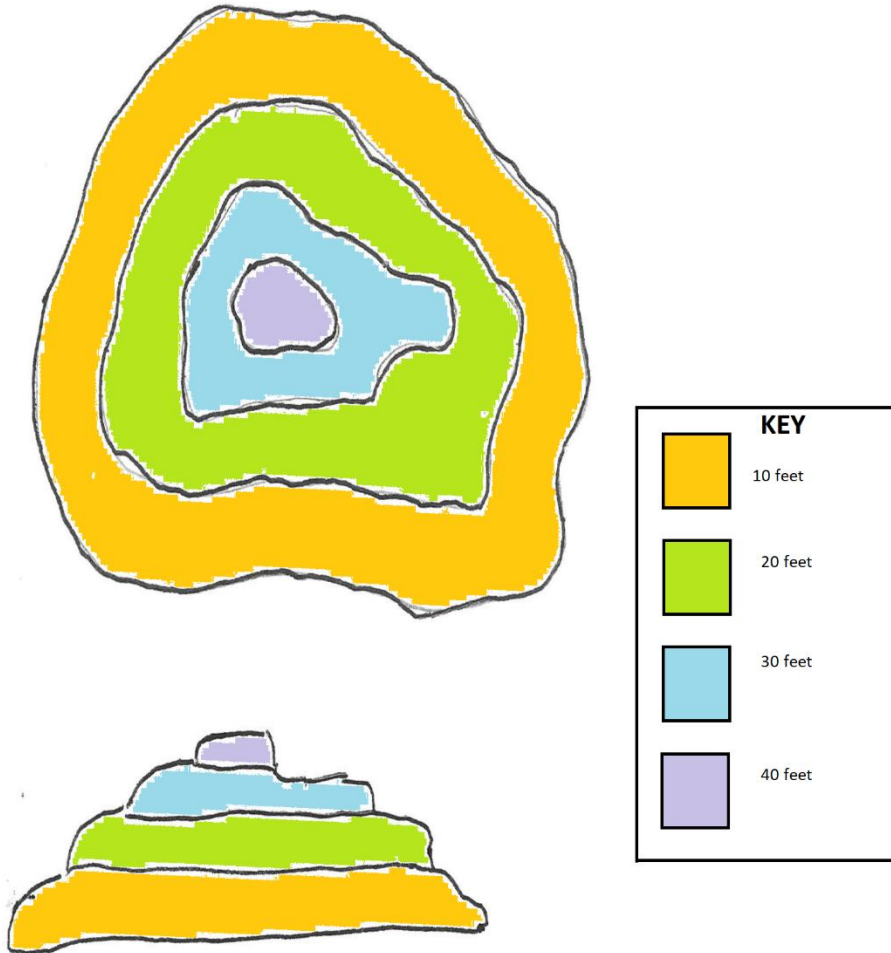


Topography Activities

For grades K-6:

Draw your own topographic map from the profile (side view) and from the top. Make a key that explains the elevations. Coloring is optional but fun!

Example:



Topography Activities

For grades 7-9:

Adapted from “ Drawing Contour Lines and Topographic Profiles” at

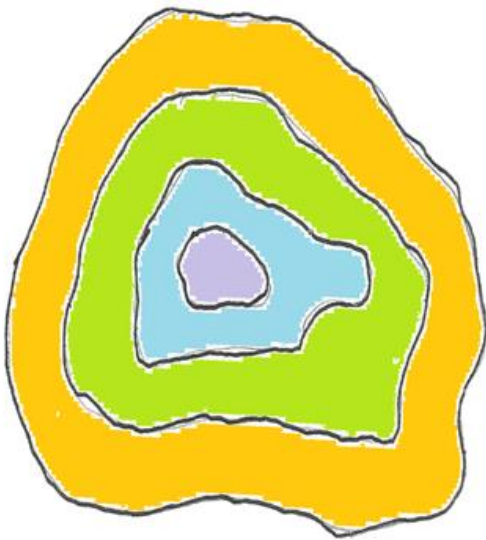
[https://geo.libretexts.org/Bookshelves/Ancillary_Materials/Laboratory/Book%3A_Laboratory_Manual_F_or_Introductory_Geology_\(Deline%2C_Harris_and_Tefend\)/03%3A_Topographic_Maps/3.6%3A_Drawing_Contour_Lines_and_Topographic_Profiles](https://geo.libretexts.org/Bookshelves/Ancillary_Materials/Laboratory/Book%3A_Laboratory_Manual_F_or_Introductory_Geology_(Deline%2C_Harris_and_Tefend)/03%3A_Topographic_Maps/3.6%3A_Drawing_Contour_Lines_and_Topographic_Profiles).

Draw a topographic map and then draw its profile. You will be able to see your map from the top down and from the side.

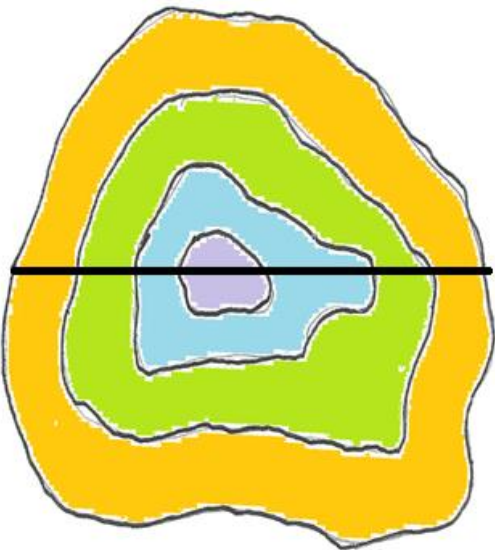
Example:

Draw a topographic map. Coloring it is optional. You can find more examples here:

http://faculty.chemeketa.edu/afrank1/topo_maps/hill_or_hole.htm

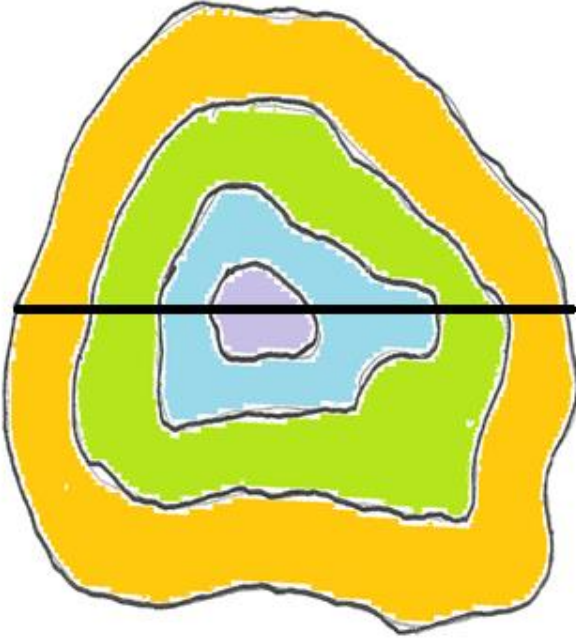


Draw a straight line across the topographic map:



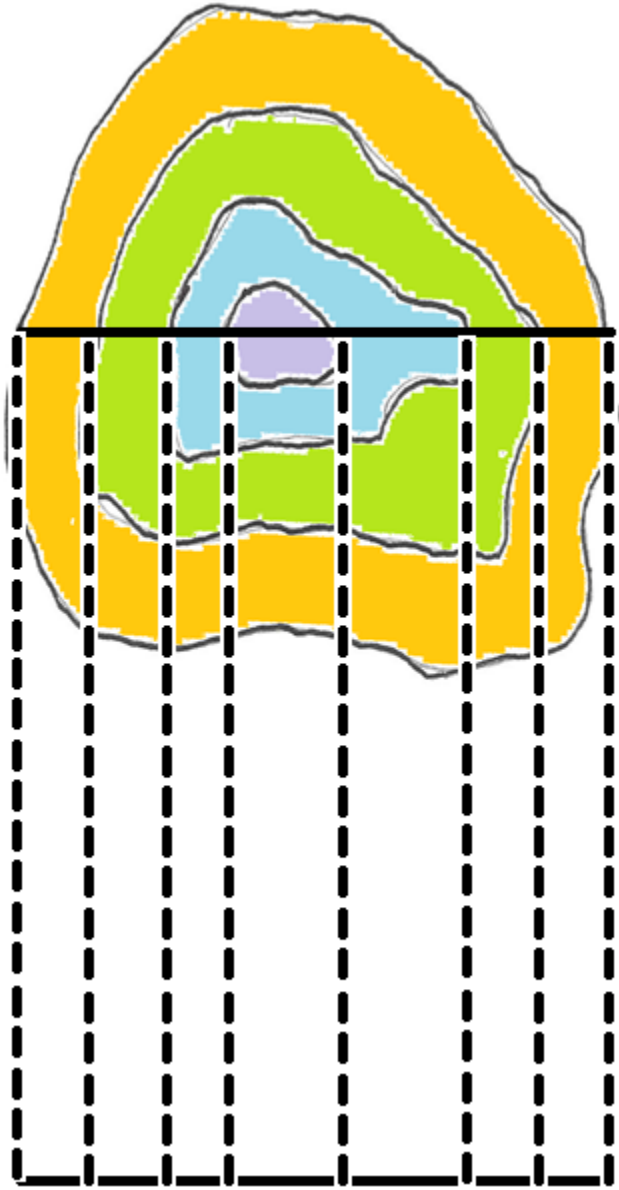
Topography Activities

Draw a second straight line below the topographic map:



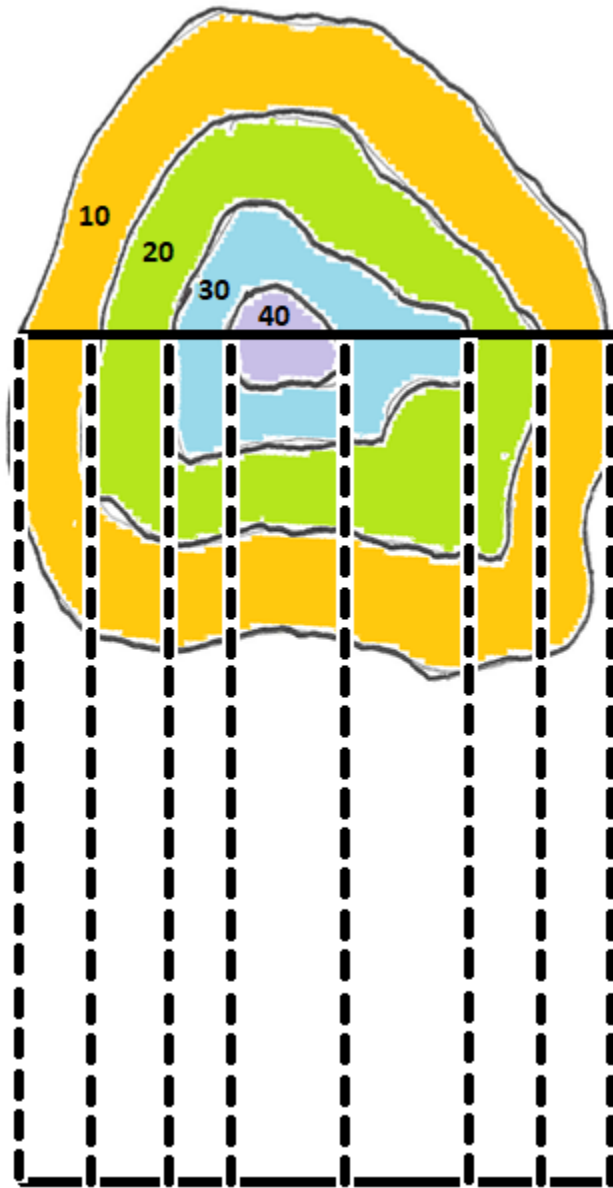
Topography Activities

Draw dashed lines from each elevation to the second straight line:



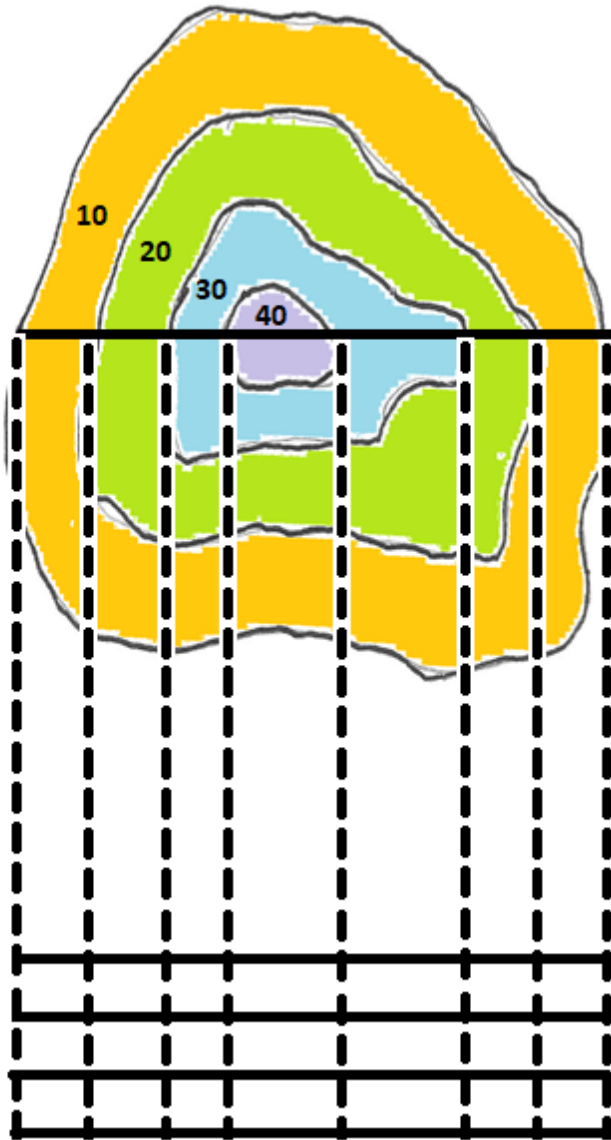
Topography Activities

Mark equal elevations at each contour line interval on the map with the map becoming taller as it goes into the middle. In my example, I put elevations of 10, but you can put elevations of 1, 5, 10, or what you choose.



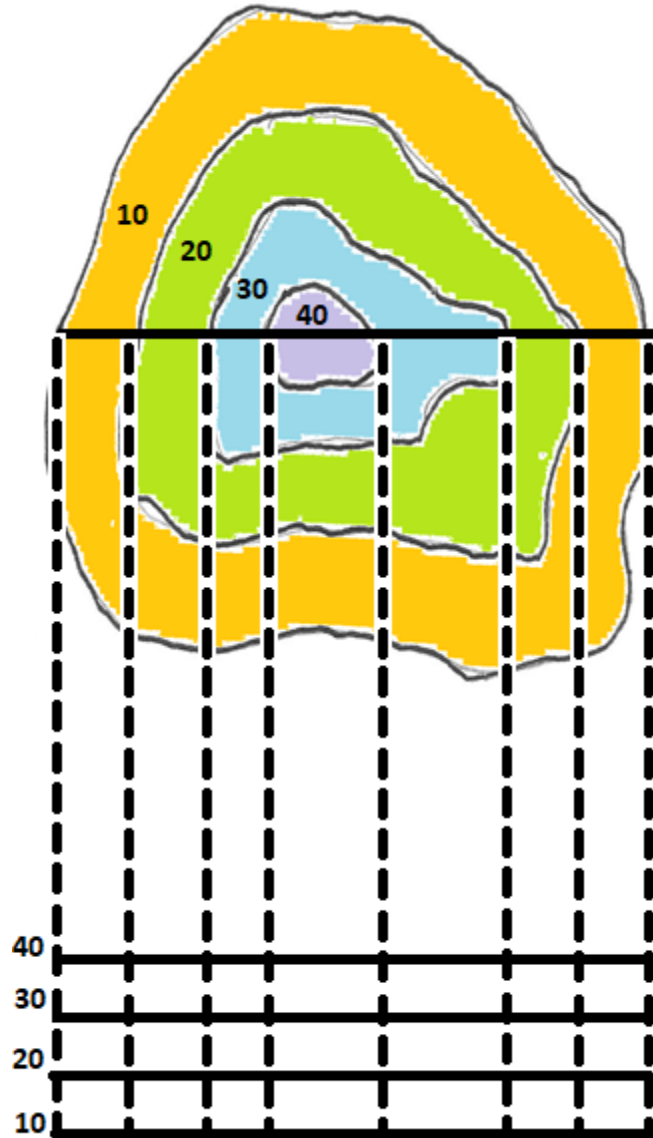
Topography Activities

Above the second straight line, draw straight lines going across the dashed line. You want to draw the same number of lines so match your contour line intervals. You want the lines to be the same distance apart.



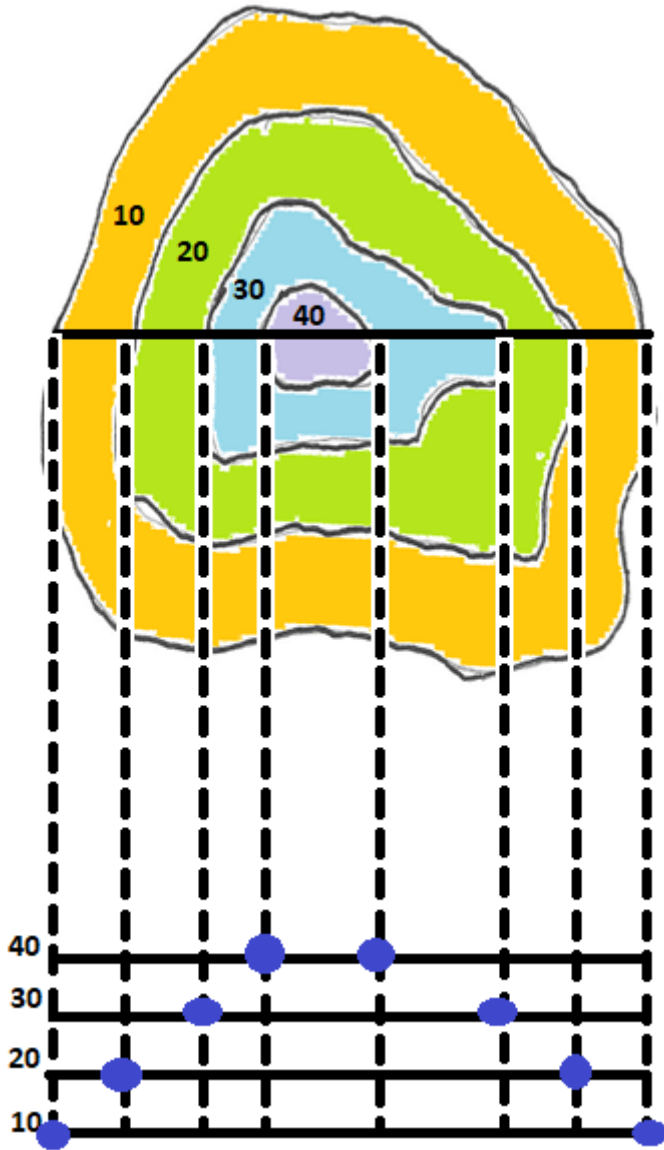
Topography Activities

To the left of the bottom of your map, label your straight lines you have just drawn with the same elevations as your topographic map. You can start with the top straight line and label it the same number as the highest point on your topographic map. Then label the next line down with your next highest point and so on. In my example, I labeled the straight lines 40, 30, 20, and 10.



Topography Activities

Mark dots on the dashed lines at each matching straight line to begin to draw your side view of the map. Your dots do not need to be as big as mine. They are big here so you can see them..



Topography Activities

Draw your profile view by sketching through the dots and rcheck to your topographic map. You are done!
You have two topogrphic views of a mountai, a valley, an island, or whatever you have created!

