

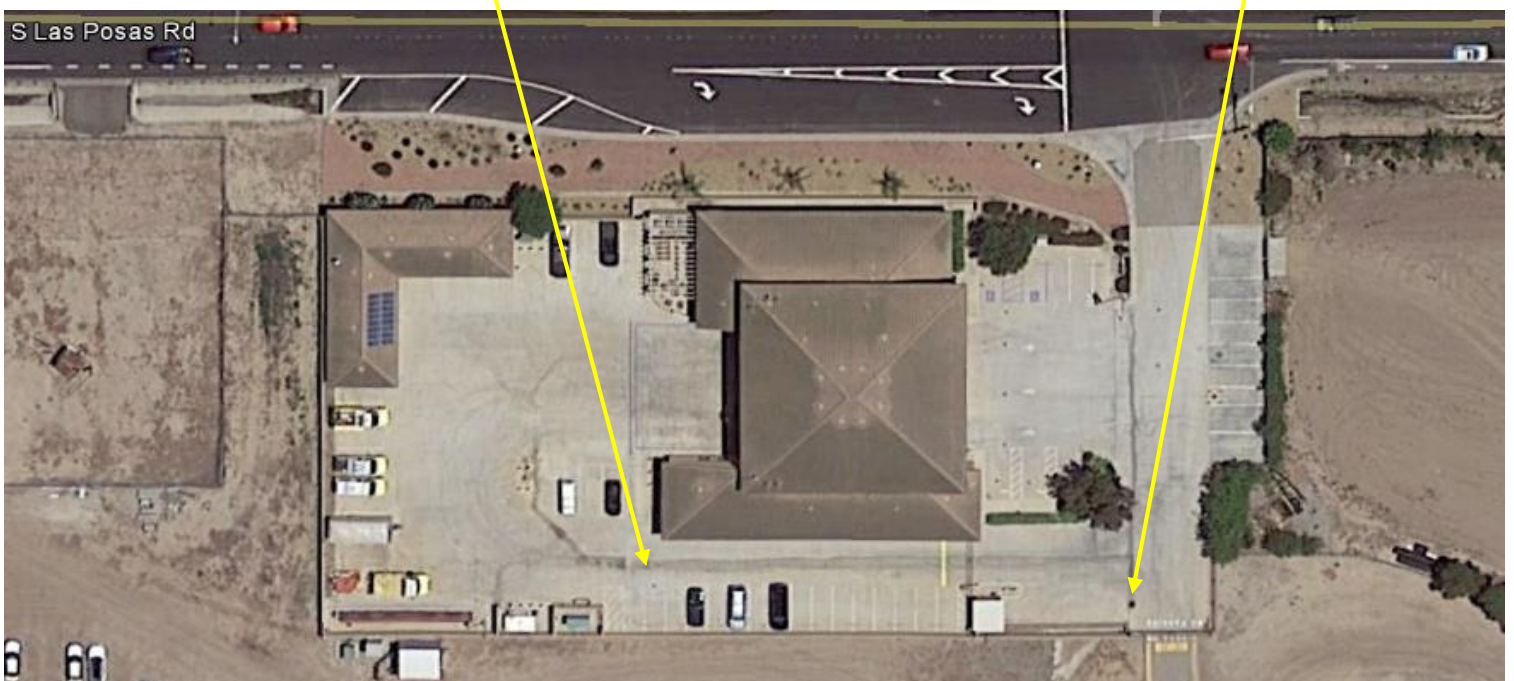
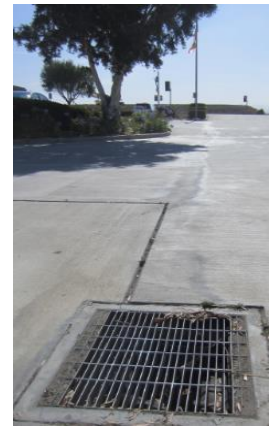
# STORMWATER POST-CONSTRUCTION TREATMENT DEVICE OPERATIONS & MAINTENANCE

## Fire Station # 50 189 South Las Posas Rd, Camarillo

Devices On-Site:  
Drywell  
Catch Basin Insert



Observation Well



# Operations & Maintenance Plan

Date: \_\_\_\_\_

O & M Personnel: \_\_\_\_\_

Signature: \_\_\_\_\_

O & M Frequency:     Pre-Wet Season (before Oct 1)     Post-Wet Season (after April 15)     After Storm

<b>Drywell</b>			
<b>Activity</b>	<b>O &amp; M Needed</b>	<b>O &amp; M Completed</b>	<b>Comments / Maintenance Performed</b>
Open Manhole and Remove Trash/Debris/Sediments.			
Repair Clear Blockages of Inlet/Outlet Pipe			
If standing water is present in observation well 4 days after rain event, maintenance is needed immediately to restore infiltration. (This may require removal and replacement of topsoil, gravel/aggregate layers, and filter fabrics)			

<b>Catch Basin Insert</b>			
<b>Activity</b>	<b>O &amp; M Needed</b>	<b>O &amp; M Completed</b>	<b>Comments / Maintenance Performed</b>
Remove Trash/Debris/Sediment			
Inspect for Tears, Holes, Bending, and Missing Hangers			
Replace Filter Medium Pouches Annually			

<http://www.kristar.com/index.php/drain-inlet-filtration/>