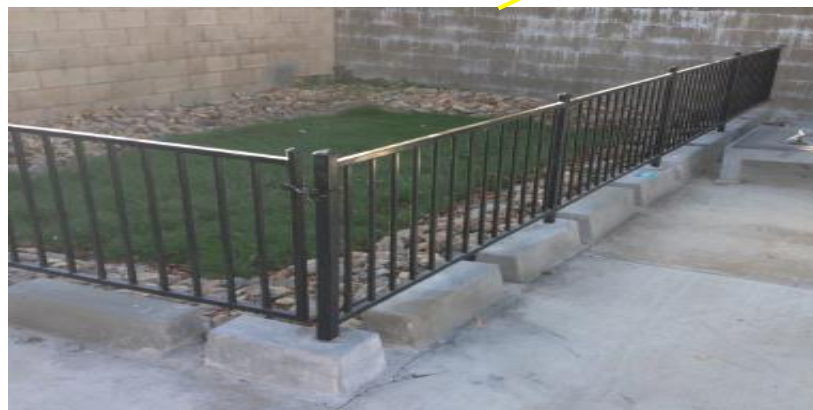
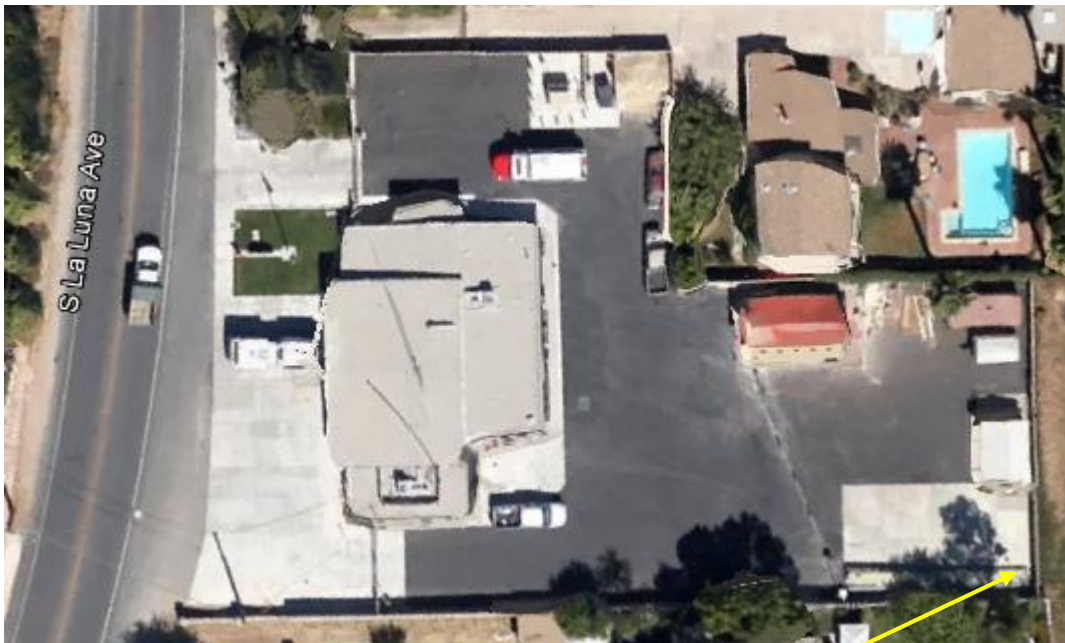


# STORMWATER POST-CONSTRUCTION TREATMENT DEVICE OPERATIONS & MAINTENANCE

**Fire Station # 22**  
**466 La Luna Ave, Meiners Oaks**

Devices On-Site:  
Bioretention



# Operations & Maintenance Plan

Date: \_\_\_\_\_

O & M Personnel: \_\_\_\_\_

Signature: \_\_\_\_\_

**O & M Frequency:**

**Pre-Wet Season**  
(before Oct 1)

**Post-Wet Season**  
(after April 15)

**After Storm**

<b>Bioretention</b>			
Activity	O & M Needed	O & M Completed	Comments / Maintenance Performed
Remove Trash/Debris/Sediment			
Assess for Poor Vegetative Health (i.e. Weeds, loss of ground cover, grass > 6" tall or mulch outside 2"-4" range)			
Repair Erosion/Scouring			
Repair and Clear Blockages of Inlet/Overflow Pipes			
If Standing Water is present 4 days after rain event, maintenance is needed immediately to restore infiltration. (See Planting/Storage Media details in 2011 Technical Guidance Manual Chapter 6 Page 44)			

\*2011 Technical Guidance Manual is available under Publications/Manuals @ <http://vcstormwater.org>